

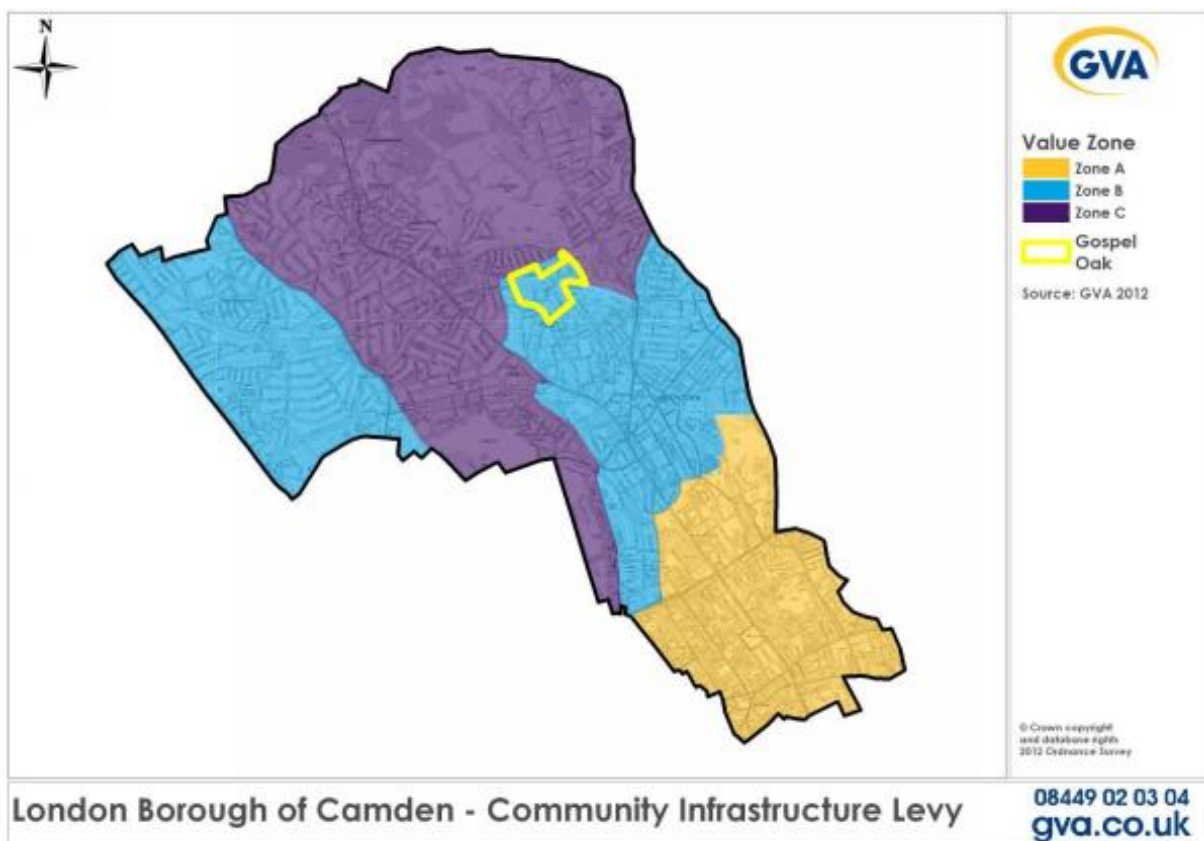
## Community Infrastructure Levy (CIL) Draft Charging Schedule

### The Charging Authority

The London Borough of Camden is a CIL Charging Authority according to part 11 of the Planning Act (as amended).

### Schedule of Rates

The London Borough of Camden is proposing to charge CIL in respect of development across the borough at the following rates.



Type of Development	Suggested CIL Tariff per sqm			
	Zone A	Zone B	Zone C	Gospel Oak
Residential below 10 dwellings	£500	£500	£500	Nil
Residential above 10 dwellings	£150	£250	£500	Nil
Residential Care Homes	£150	£250	£500	Nil
Retail and Other Use Class A, Use Class D2 and Commercial Leisure uses such as nightclubs	£25	£25	£25	Nil
Office	£45	£25	£25	Nil
Students Housing	£175	£400	£400	Nil
Hotel incl Holiday Hostels	£40	£30	£30	Nil
General Public Service Buildings	Nil	Nil	Nil	Nil

Suggested CIL Tariff (Pounds per square metre GIA)	Type of Development
<b>Band 1</b>	
£500	<ul style="list-style-type: none"> <li>• Residential below 10 dwellings</li> <li>• Residential above 10 dwellings (Zone C)</li> <li>• Residential Care Homes (Zone C)</li> </ul>
<b>Band 2</b>	
£400	<ul style="list-style-type: none"> <li>• Student Accommodation (Zone B &amp; C)</li> </ul>
<b>Band 3</b>	
£250	<ul style="list-style-type: none"> <li>• Residential above 10 dwellings (Zone B)</li> <li>• Residential Care Homes (Zone B)</li> </ul>
<b>Band 4</b>	
£175	<ul style="list-style-type: none"> <li>• Student Housing (Zone A)</li> </ul>
<b>Band 5</b>	
£150	<ul style="list-style-type: none"> <li>• Residential (Zone A)</li> <li>• Residential (Zone A)</li> </ul>
<b>Band 6</b>	
£45	<ul style="list-style-type: none"> <li>• Office (Zone A)</li> </ul>
<b>Band 7</b>	
£40	<ul style="list-style-type: none"> <li>• Hotels incl holiday hostels (Zone A)</li> </ul>
<b>Band 8</b>	
£30	<ul style="list-style-type: none"> <li>• Hotels incl holiday hostels (Zone B &amp; C)</li> </ul>
<b>Band 9</b>	
£25	<ul style="list-style-type: none"> <li>• Retails, Restaurants, Bars, Cafés, Use Class D2 and Commercial Leisure uses such as nightclubs</li> <li>• Offices (Zone B&amp;C)</li> <li>• All other uses not separately identified within the Schedule</li> </ul>
<b>Band 10</b>	
Nil	<ul style="list-style-type: none"> <li>• General Public Service Buildings such as libraries, advice centres, education &amp; training facilities provided by/funded by the public sector</li> <li>• All other uses within Gospel Oak area</li> </ul>